



Choir

May 5-7, 2022 * Oregon State University * Corvallis



Supporting students all the way across the finish line.

OnPoint is proud to support the OSAA and student participants. It's our honor to help students achieve their goals both in the classroom and on the field.

onpointcu.com | 800.228.7077 | 503.228.7077

OSAA / ONPOINT COMMUNITY CREDIT UNION STATE CHAMPIONSHIPS



Welcome to the OSAA / OnPoint Community Credit Union State Championships!

State championships are always memorable, but this year's events take on special meaning for all of us given the challenging times our member schools, students, and communities have been facing. These events serve as a tribute to the dedication, determination, and resolve of the young people competing here today; as well as the school leaders, athletic directors, coaches, and officials who have worked together to persevere while ensuring meaningful participation opportunities for students.

We also want to recognize and thank all the parents and fans who continue to support students as they participate in activities that will help prepare them to succeed in their future endeavors.

Congratulations to the students, coaches, and school communities who earned the right to compete in this state championship! And join us in thanking OnPoint Community Credit Union for sharing our belief in the importance and value of high school activities through their continued financial commitment.

We appreciate your support of Oregon high school activities.

Peter Weber
Executive Director
Oregon School Activities Association



On behalf of OnPoint Community Credit Union and our valued members, welcome to the OSAA/OnPoint Community Credit Union State Championships!

At OnPoint, it's the people and communities we serve that matter most. From our members and employees to our neighbors and partners, we are committed to helping people prosper. Our community connection is strengthened by the passion and commitment of our nearly 1,000 employees and more than 476,000 members.

A trusted financial partner with deep roots in education, OnPoint values educational enrichment and equipping students with the tools they need to reach their full potential. Since our founding in 1932, we have made it a priority to deepen our presence in the community by supporting students, schools and educators. Now 90 years later, we are proud to partner with the OSAA to encourage an environment where students can learn and grow in community, teamwork and leadership.

Congratulations to all of the students, schools, coaches and families participating in today's state championship. You have worked hard to get here, and we are honored to be a part of your celebration.

Rob Stuart
President/Chief Executive Officer
OnPoint Community Credit Union



OnPoint[®]
COMMUNITY CREDIT UNION



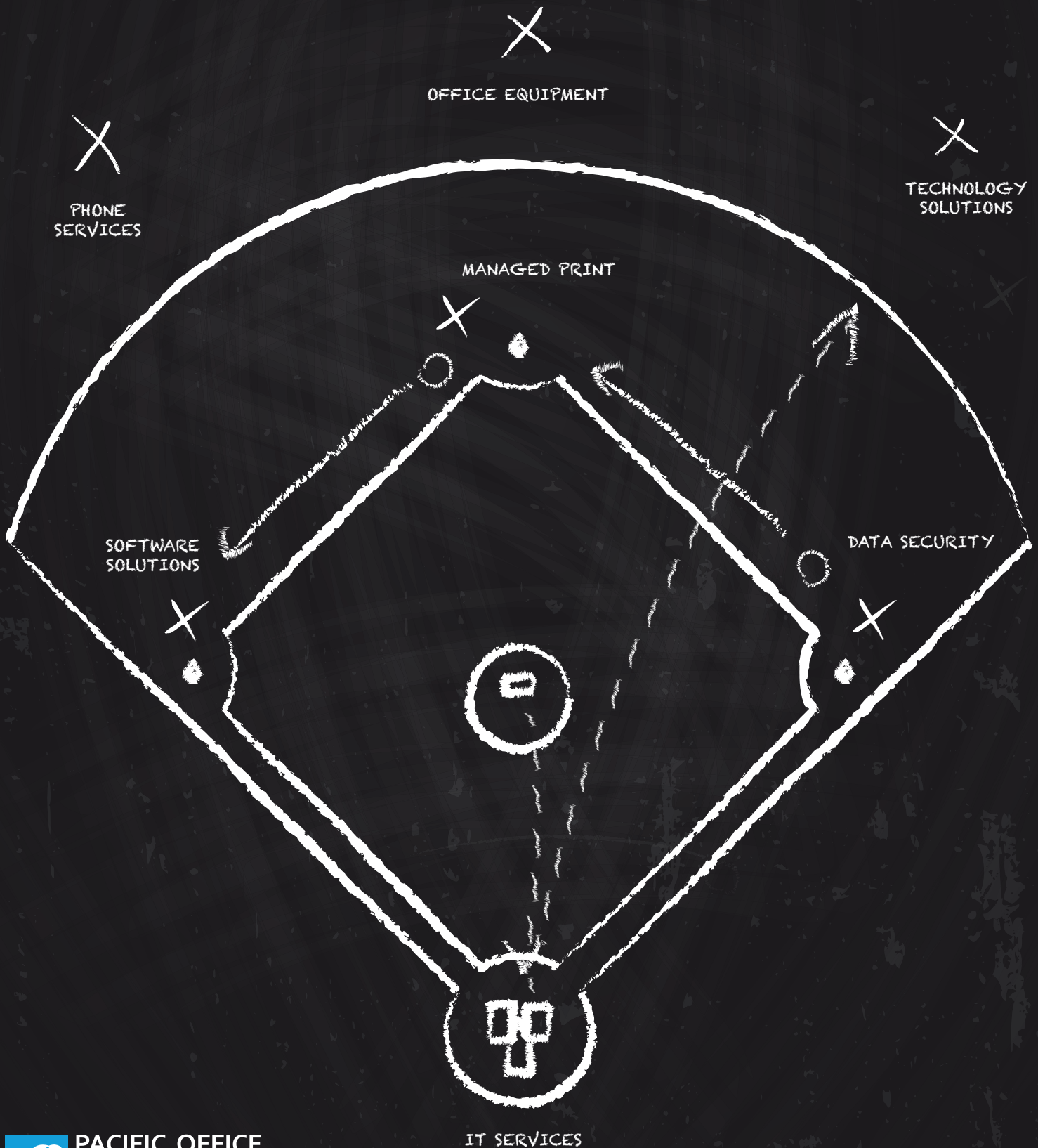
Health insurance is
better with a guide.

Experience better.

Proud sponsor of the OSAA



PACIFIC OFFICE AUTOMATION HAS YOUR OFFICE GAME PLAN



OSAA



25200 SW Parkway Avenue, Suite 1
Wilsonville, OR 97070-9616

www.osaa.org

About the OSAA

The OSAA is comprised of 290 member high schools representing more than 200 Oregon communities. A private non-profit, board-governed association, the OSAA is sanctioned by the Oregon State Board of Education and is a member of the National Federation of State High School Associations (NFHS).

It's History

The OSAA began in 1918 when administrators from 36 schools recognized a need for an organization to coordinate and regulate high school interscholastic competition. Thus the Oregon State High School Athletic Association was formed. The name was changed in 1947 to reflect the inclusion of activities outside of traditional athletics.

Mission Statement

The mission of the OSAA is to serve member schools by providing leadership and state coordination for the conduct of interscholastic activities, which will enrich the educational experiences of high school students. The OSAA will work to promote interschool activities that provide equitable participation opportunities, positive recognition and learning experiences to students, while enhancing the achievement of educational goals.

What the OSAA Does

Much like the NCAA at the collegiate level, the OSAA regulates the eligibility and competition of all high school students in the state. This includes everything from determining which league a school will compete in to sponsoring and administering state championships.

Funding

As a private, non-profit organization, the OSAA does not receive any state funding. Revenue is generated from three sources: school membership fees, state championship gate receipts and corporate sponsors.

OSAA Activities

The OSAA sponsors 113 team and 426 individual event state championships for students competing in 19 interscholastic activities:

Fall

Cross Country, Volleyball, Soccer, Football

Winter

Cheerleading, Wrestling, Swimming, Basketball, Dance/Drill

Spring

Speech, Solo Music, Choir, Band/Orchestra
Golf, Tennis, Track & Field, Softball, Baseball

EXECUTIVE BOARD



Mike Scott (Vice Pres.)
Superintendent
Hillsboro SD
6A



Kevin Bogatin
Superintendent
North Bend SD
5A



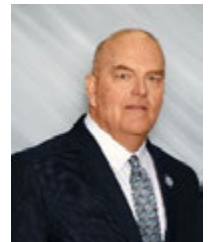
Curt Shelley (Pres.)
Superintendent
Tillamook SD
4A



Steve Quick
Superintendent
Harney County SD
3A



Matt Combe
Principal
Heppner HS
2A



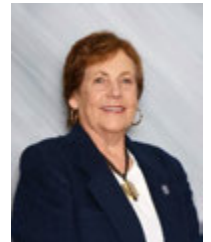
Jack Henderson
Superintendent
Dufur SD
1A



Larry Ramirez
Dir. of High School Ed.
Salem-Keizer SD
6A/5A/4A At-Large



Heidi Sipe
Superintendent
Umatilla SD
3A/2A/1A At-Large



Sherry Higgins
School Board
Lane County ESD
OSBA



Tim Sam
Athletic Director
North Valley HS
OADA



David Nieslanik
Principal
Southridge HS
Activities



John Beck
Football Coach
Grant HS
OACA



Jack Folliard
Executive Director
OAOA

OREGON SCHOOL ACTIVITIES ASSOCIATION
2021-22 Delegate Assembly

DISTRICT	TERM EXP		NAME	POSITION	SCHOOL / DISTRICT
6A-1 Portland Interscholastic League	2023	**	Chris Frazier	Principal	Franklin HS
6A-2 Metro League	2023		Todd Corsetti	Principal	Mountainside HS
6A-3 Pacific Conference	2024	EB	Mike Scott	Superintendent	Hillsboro SD
6A-4 Mt. Hood Conference	2024	*	Drake Shelton	Principal	Gresham HS
6A-5 Three Rivers League	2024	**	Andy Jones	Assistant Principal	Oregon City HS
6A-6 Mountain Valley Conference	2024	EB	Larry Ramirez	Dir. Of Secondary Ed	Salem Keizer SD
6A-7 Southwest Conference	2024	**	Clay Rounsaville	Athletic Director	Grants Pass HS
5A-1 Northwest Oregon Conference	2024	**	Scot Stockwell	Superintendent	St. Helens SD
5A-2 Midwestern League	2024	EB	Kevin Bogatin	Superintendent	North Bend SD
5A-3 Mid-Willamette Conference	2022		Rich Engel	Assistant Principal	West Albany HS
5A-4 Intermountain Conference	2023		Kurt Evans	Principal	The Dalles HS
4A-1 Cowapa League	2024	EB	Curt Shelley	Superintendent	Tillamook SD
4A-2 Tri-Valley Conference	2024	*	Bob Stewart	Superintendent	Gladstone SD
4A-3 Oregon West Conference	2023		Curt Scholl	Superintendent	Sisters SD
4A-4 Sky-Em League	2024	**	Gary Carpenter	Superintendent	Fern Ridge SD
4A-5 Skyline Conference	2023	**	Erik Lathen	Principal	North Valley HS
4A-6 Greater Oregon League	2022		George Mendoza	Superintendent	La Grande SD
3A-1 Lewis & Clark League	2024	*	John Hynes	Principal	Westside Christian HS
3A-2 PacWest Conference	2024	**	Chris Daniels	Principal	Amity HS
3A-3 Coastal Range League	2024	**	Ian O'Brien	Assistant Principal	Warrenton HS
3A-4 Mountain Valley Conference	2023		Brandon Standridge	Assistant Principal	Creswell HS
3A-5 Far West League	2023		Craig Anderson	Principal	Douglas HS
3A-6 Eastern Oregon League	2022	EB	Heidi Sipe	Superintendent	Umatilla SD
2A-1 Northwest League	2023	**	Misty Wharton	Superintendent	Nestucca Valley SD
2A-2 Tri-River Conference	2024	*	Josh Davis	Principal	Culver HS
2A-3 Central Valley Conference	2024		Bill Crowson	District Athletic Director	Monroe SD
2A-4 Sunset Conference	2022		Bart Rothenberger	Athletic Director	Toledo HS
2A-5 Southern Cascade League	2024	**	Jamie Ongman	Principal	Lost River HS
2A-6 Blue Mountain Conference	2024	EB	Matt Combe	Principal	Heppner HS
1A-1 The Valley 10 League	2024	*	Josh Feil	Dean of Students	St. Stephens Academy
1A-2 Casco League	2024	**	Dan Dugan	Superintendent	Perrydale SD
1A-3 Mountain West League	2023	**	Marc Thielman	Superintendent	Alsea SD
1A-4 Skyline League	2023		James Ellis	Principal	Days Creek Charter School
1A-5 Mountain Valley League	2022		David Haynes	Principal	Trinity Lutheran HS
1A-6 Big Sky League	2023	EB**	Jack Henderson	Superintendent	Dufur SD
1A-7 Old Oregon League	2024	*	Lance Dixon	Superintendent	North Powder SD
1A-8 High Desert League	2024	*	Matt Hawley	Superintendent	Crane SD
Oregon School Boards Assn	2023	EB	Sherry Higgins	School Board	Lane County ESD
Oregon Athletic Directors Assn	2023	EB	Tim Sam	Athletic Director	North Valley HS
Activities Advisory Committee	2024	EB	David Nieslanik	Principal	Southridge HS
Oregon Athletic Coaches Assn	2023	EB	John Beck	Coach	Grant HS
Oregon Athletic Officials Assn	2022	EB	Jack Folliard	Executive Director	Officials Association

* Newly elected ** Re-elected
 (EB) OSAA Executive Board Member





WATCH HIGH SCHOOL SPORTS LIVE ON THE NFHS NETWORK

Stream **LIVE** or
On Demand from any device



Desktop



Mobile



Tablet



Connected Apps



WWW.NFHSNETWORK.COM

SUBSCRIBE | FOLLOW | WATCH



OSAA / OnPoint Community Credit Union
2022 CHOIR STATE CHAMPIONSHIPS

May 5-7, 2022
The LaSells Stewart Center, Oregon State University
875 SW 26th St, Corvallis, OR 97331



STATE CHAMPIONSHIP DIRECTOR

DR. MATTHEW L. STRAUER is a retired Oregon choral music educator. He has taught at Corban University, Oregon State University, Santiam Christian Schools, and at Charlo, Montana. He earned his Bachelor of Music Education degree from the University of Montana in Missoula (he also earned a Bachelor's in Geology at UM) and a Master of Arts in New Testament Studies from Wheaton College Graduate School. He earned a Doctorate of Musical Arts in Music Education and Choral conducting at the University of Oregon. He is past president of Oregon ACDA. Matt has always been involved in church music. He is the worship pastor at Keizer Community Church. Matt promotes sight singing as a presenter, adjudicator and clinician. For other interests, Matt enjoys hiking, mountaineering, rock climbing, photography, computers and family. Matt and wife Naomi reside in Salem. They have four married children and three grandchildren. For his "second" career, Matt is selling real estate in the Mid-Willamette Valley. Matt is thrilled to hear the wonderful choirs at the OSAA Championships.

PERFORMANCE ADJUDICATORS

RYAN BEEKEN, Director of Choral Activities at Wichita State University where he conducts the Concert Chorale and Madrigal Singers, teaches graduate and undergraduate choral conducting and literature, and oversees the choral area. He received Bachelor of Music in Vocal Performance and Bachelor of Music Education degrees from Drake University and Master of Music and Doctor of Musical Arts Degrees in Choral Conducting from Michigan State University. Beeken's choirs have performed at State, Regional, and National ACDA Conventions and for state and regional NAFME. He has served on the executive committee of the American Choral Directors Association at both the state and regional level and just completed a term as the President for the D3 Pennsylvania Music Educators Association. Prior to his appointment at WSU, Dr. Beeken served as director of choral studies at Indiana University of Pennsylvania and taught at Michigan State University. While residing in Des Moines, Iowa, Beeken directed the Drake Chorale at Drake University. He also taught elementary, middle school, and high school music for sixteen years, most recently serving as Director of Vocal Music for Waukee Schools in suburban Des Moines where he led a program of over 300 students and twelve ensembles to national distinction.

DR. EMILY MERCADO, Assistant Professor of Choral Music Education at the University of Utah where she teaches choral music education courses at the undergraduate and graduate levels, supervises music education student research, and conducts Voci Altissime, a treble voice choir. Mercado is an active conductor, clinician, adjudicator, and researcher. Her research has appeared in leading music education journals including Research Studies in Music Education, Journal of Music Teacher Education, Update: Applications of Research in Music Education, and Arts Education Policy Review. Mercado has presented at the Society for Music Teacher Education Symposium, NAFME's Research and Teacher Education National Conference, the American Education Research Association Annual Meeting, and state and regional music education conferences in Oregon, Louisiana, and Utah. Mercado is currently president-elect for ACDA-UT. Mercado received a Ph.D. in Music Education from Louisiana State University, a Master of Arts in Teaching degree from Oregon State University, and a Bachelor of Arts degree from Oregon State University.

DR. JEFFREY ALLEN MURDOCK, Associate Director of Choral Activities and Assistant Professor of Music at the University of Arkansas. He is the 2016 Connor Endowed Faculty Fellow in the J. William Fulbright College of Arts and Science, and 2019 Most Outstanding Faculty at the University of Arkansas. He is the 2021 GRAMMY Music Educator of the Year. Dr. Murdock has conducted regional and state honor choirs, and headlined conferences in 26 states and 5 countries. With research interests inclusive of Culturally Responsive Pedagogy in the Choral Classroom, Music in Urban Schools, and Social Justice in Music Education, he has presented at state, regional and national conferences of the National Association for Music Education (NAfME), the International Society for Music Education (ISME), and the American Choral Director's Association, where he serves as president-elect of the Southwestern Division, past-president of Arkansas ACDA, and serves on the national diversity subcommittee. Choirs under Dr. Murdock's direction have performed at the Arkansas All-



OSAA / OnPoint Community Credit Union
2022 CHOIR STATE CHAMPIONSHIPS
May 5-7, 2022
The LaSells Stewart Center, Oregon State University
875 SW 26th St, Corvallis, OR 97331



State Conference and the Southwestern Division Conference of the American Choral Directors Association. In addition to being an accomplished conductor of western choral music, Dr. Murdock is also a skilled gospel musician and conductor. He has served on the conducting staff of the National Baptist Convention, USA, Inc., has collaborated with numerous world-renown Gospel recording artists. Dr. Murdock holds a bachelor's degree in Music Education and a Master of Music degree in Choral Conducting, both from the University of Southern Mississippi, and a Doctor of Philosophy (Ph. D) in Music Education from the University of Memphis.

SIGHT READING ADJUDICATOR

DR. SANDRA LEE BABB, is Assistant Professor of Choral Music Education at Oregon State University, where she teaches choral methods, vocal pedagogy, and choral conducting. She also directs OSU Bella Voce, recently featured at the 2021 National Conference of the American Choral Directors Association, and the University Chorale. Known for her work in developing choral tone, Dr. Babb is an active conductor and clinician throughout the United States. She has co-authored articles for the *International Journal of Research in Choral Singing*, *The Journal of Music Teacher Education*, and the *Choral Journal*, and she is a contributing author for *Composing in Choirs*, GIA Publications, *Teaching Music through Performance in Choir, Volume IV*, GIA Publications, and *Voices in Concert*, Hal Leonard Corporation. Babb received her BME, MME, and PhD from Florida State University and is a National Center for Voice and Speech certified vocologist. She currently serves at the Oregon ACDA Chair for Treble Choirs and as the NW-ACDA Chair for Student Activities. Sandra enjoys living in the Pacific Northwest, singing with the Corvallis Repertory Singers, building partnerships with local K-12 schools, and directing the OSU Summer Choir Camp for high school singers.

Sight Reading materials for the 2022 Choir State Championships have been created by **DR. SANDRA LEE BABB** and reviewed by **DR. MATTHEW STRAUER** and **DR. STEVEN ZIELKE**.

TAPE POOL ADJUDICATOR

DR. JEREMY MIMS, Assistant Professor of Music at Winthrop University, where he is the Director of Choral Activities. He conducts the Chorale, Chamber Singers, and Collegiate Choir, as well as teaches conducting to undergraduate and graduate students. Previously he was the chair of the music department at Clarke University in Dubuque, IA, where conducted the choirs and string orchestra. He has held numerous positions with community choirs and orchestras and with various churches. His ensembles have performed for various conventions, and he is a frequent clinician for area honor choir. Dr. Mims has served as musical director, chorus master, and accompanist of shows for various professional, collegiate, and local theatres and opera companies. A musician of multiple talents and diversity, Jeremy has appeared on national and international concert and opera stages as a conductor, collaborative pianist, violinist, and a tenor chorister. Active in the American Choral Directors Association, Mims has presented at regional and national conventions. Dr. Mims holds degrees from Hardin-Simmons University and the University of Missouri-Kansas City Conservatory of Music and Dance. He is actively researching the works of Mexican Baroque composer Miguel Mateo Dallo y Lana.

Assisting Dr. Mims with Tape Pool Selections this year was **CRAIG ALLEN**, Adjunct Instructor of Music at Winthrop University.

Tradition

It's an established way of thinking about celebrating milestones - personal and collective. In sports, it's pitching the perfect game or setting a new PR on the track. At Abby's, we're proud to have been a part of your landmark occasions, new and old, for nearly sixty years. That's an important heritage that makes us proud to be your legendary pizza tradition.

36 Convenient Locations
abbys.com

PROUD
PARTNER



Abby's
LEGENDARY PIZZA



OSAA / OnPoint Community Credit Union
2022 CHOIR STATE CHAMPIONSHIPS
May 5-7, 2022
The LaSells Stewart Center, Oregon State University
875 SW 26th St, Corvallis, OR 97331



3A, 2A/1A PERFORMANCE ORDER – THURSDAY, MAY 5

<u>WARM-UP</u>	<u>PERFORM</u>	<u>SIGHT-READ</u>	<u>SCHOOL</u>		<u>DIRECTOR</u>
10:40 AM	11:00 AM	11:20 AM	Salem Academy	2A/1A	Kent Wilson
11:00 AM	11:20 AM	11:40 AM	Crosspoint Christian	2A/1A	Dan Conrad
11:20 AM	11:40 AM	12:00 PM	Veritas	2A/1A	Sally Mehler
11:40 AM	12:00 PM	12:20 PM	Trinity Lutheran	2A/1A	Jonathan Vevia
12:00 PM	12:20 PM	12:40 PM	Perrydale	2A/1A	Misty Matthews
	12:40 PM		Break		
12:40 PM	1:00 PM	1:20 PM	Southwest Christian	2A/1A	Joy Tovar
1:00 PM	1:20 PM	1:40 PM	Bandon	2A/1A	Dave Weston
1:20 PM	1:40 PM	2:00 PM	Lowell	2A/1A	Paul Burch
1:40 PM	2:00 PM	2:20 PM	Delphian	2A/1A	Craig Baider
2:00 PM	2:20 PM	2:40 PM	North Clackamas Christian	2A/1A	Rebecca Steele
	2:40 PM		Lunch		
	Approximately 3:20 PM		2A/1A Awards		
3:20 PM	3:40 PM	4:00 PM	Westside Christian	3A	Will Fox
3:40 PM	4:00 PM	4:20 PM	Douglas	3A	Hannah Abercrombie
4:00 PM	4:20 PM	4:40 PM	Rainier	3A	Madison Keezer-Birmingham
	Approximately 5:00 PM		3A Awards		



OSAA / OnPoint Community Credit Union
2022 CHOIR STATE CHAMPIONSHIPS
May 5-7, 2022
The LaSells Stewart Center, Oregon State University
875 SW 26th St, Corvallis, OR 97331



5A, 4A PERFORMANCE ORDER – FRIDAY, MAY 6

Updated: 05/02/22

<u>WARMUP-UP</u>	<u>PERFORM</u>	<u>SIGHT-READ</u>	<u>SCHOOL</u>	<u>DIRECTOR</u>
10:40 AM	11:00 AM	11:20 AM	McLoughlin	4A Melissa Cunningham
11:00 AM	11:20 AM	11:40 AM	Seaside	4A Kimber Parker
11:20 AM	11:40 AM	12:00 PM	Sisters	4A Rick Johnson
11:40 AM	12:00 PM	12:20 PM	Henley	4A Christopher Benjamin
12:00 PM	12:20 PM	12:40 PM	Estacada	4A Rendell Frunk
12:20 PM	12:40 PM	1:00 PM	Molalla	4A Tim Friesen
12:40 PM	1:00 PM	1:20 PM	La Grande	4A Kevin Durfee
	1:20 PM		Lunch	
	Approximately 2:00 PM		4A Awards	
2:00 PM	2:20 PM	2:40 PM	Hood River Valley	5A Dan Kenealy
2:20 PM	2:40 PM	3:00 PM	Hillsboro	5A Benjamin Noyes
2:40 PM	3:00 PM	3:20 PM	Central	5A Jeffrey Witt
3:00 PM	3:20 PM	3:40 PM	St. Helens	5A Eric Stearns
3:20 PM	3:40 PM	4:00 PM	Ridgeview	5A Belinda Sisson
	4:00 PM		Break	
4:00 PM	4:20 PM	4:40 PM	North Bend	5A Ken Graber
4:20 PM	4:40 PM	5:00 PM	South Albany	5A Brett DeYoung
4:40 PM	5:00 PM	5:20 PM	Wilsonville	5A Annie Kubitschek
5:00 PM	5:20 PM	5:40 PM	Putnam	5A Erika Lockwood
	Approximately 6:00 PM		5A Awards	



OSAA / OnPoint Community Credit Union
2022 CHOIR STATE CHAMPIONSHIPS
May 5-7, 2022
The LaSells Stewart Center, Oregon State University
875 SW 26th St, Corvallis, OR 97331



6A PERFORMANCE ORDER – SATURDAY, MAY 7

<u>WARM-UP</u>	<u>PERFORM</u>	<u>SIGHT-READ</u>	<u>SCHOOL</u>		<u>DIRECTOR</u>
8:40 AM	9:00 AM	9:20 AM	Sherwood	6A	Kathy Shuckerow
9:00 AM	9:20 AM	9:40 AM	Franklin	6A	Karen Bohart
9:20 AM	9:40 AM	10:00 AM	Newberg	6A	Matthew Fletcher
9:40 AM	10:00 AM	10:20 AM	Lincoln	6A	Lisa Riffel, Garrett Bond
10:00 AM	10:20 AM	10:40 AM	Southridge	6A	Anna Rikli
10:20 AM	10:40 AM	11:00 AM	South Medford	6A	Andrea Brock
	11:00 AM		Break		
11:00 AM	11:20 AM	11:40 AM	West Linn	6A	Aubrey Patterson
11:20 AM	11:40 AM	12:00 PM	Summit	6A	Melissa Jacot
11:40 AM	12:00 PM	12:20 PM	Tigard	6A	Robert Hawthorne
12:00 PM	12:20 PM	12:40 PM	Lake Oswego	6A	Tara Bamford
12:20 PM	12:40 PM	1:00 PM	Westview	6A	Kevin Wong
12:40 PM	1:00 PM	1:20 PM	McKay	6A	Peter Sepulveda
	1:20 PM		Lunch		
2:00 PM	2:20 PM	2:40 PM	Oregon City	6A	Julia Voorhies
2:20 PM	2:40 PM	3:00 PM	South Salem	6A	Aubrey Dunham
2:40 PM	3:00 PM	3:20 PM	Grants Pass	6A	Julie Lehnhardt
3:00 PM	3:20 PM	3:40 PM	Sprague	6A	David Brown
3:20 PM	3:40 PM	4:00 PM	David Douglas	6A	Christopher Silva
3:40 PM	4:00 PM	4:20 PM	Canby	6A	Brooks Gingerich
	4:20 PM		Break		
4:20 PM	4:40 PM	5:00 PM	St. Mary's Academy	6A	Kathy Briggs
4:40 PM	5:00 PM	5:20 PM	Roseburg	6A	Julie Cherry
5:00 PM	5:20 PM	5:40 PM	Gresham	6A	Janine Kirstein
5:20 PM	5:40 PM	6:00 PM	West Salem	6A	Cole Haole-Valenzuela
5:40 PM	6:00 PM	6:20 PM	Grant	6A	John Eisemann
6:00 PM	6:20 PM	6:40 PM	Mountain View	6A	Susan Evans
	Approximately 7:00PM		6A Awards		



Black Bear Diner®

BREAKFAST
SERVED *All Day!*



GOOD OLD-FASHIONED
FAMILY FOOD®

BREAKFAST

LUNCH

DINNER



LET US BUY YOU BREAKFAST



Get 2 FREE meals
your first year when you
join our Bear Lovers eClub.

**TEXT TEAM TO 94418
OR SCAN THIS CODE**



Order for pickup
or delivery at

BLACKBEARDINER.COM



**OSAA REGULAR DISTRICTS
2021-22
(includes Adjusted 2019-20 ADM)**

6A (55)	5A (32)	4A (34)
1260+	1259-665	664-350
6A-1 - Portland Interscholastic (9)	5A-1 - Northwest Oregon Conference (8)	4A-1 - Cowapa League (5)
Benson Techmen* 931	Hillsboro Spartans 1073	Astoria Fishermen 522
Cleveland Warriors 1481	La Salle Prep Falcons 693	Banks Braves 359
Franklin Lightning 1730	Milwaukie / Arts Academy Mustangs 966	Seaside Seagulls 404
Grant Generals 1747	Parkrose Broncos 820	Tillamook Cheesemakers 611
Jefferson Democrats* 553	Putnam Kingsmen 1076	Valley Catholic Valiants 369
Lincoln Cardinals 1540	Scappoose Indians 668	
McDaniel Mountain Lions* 919	St. Helens Lions 752	4A-2 - Tri-Valley Conference (6)
Roosevelt Roughriders* 1015	Wilsonville Wildcats 1140	Corbett Cardinals 353
Wells Guardians 1479		Estacada Rangers 420
	5A-2 - Midwestern League (9)	Gladstone Gladiators 583
6A-2 - Metro League (7)	Ashland Grizzlies 907	Madras White Buffaloes 525
Aloha Warriors 1516	Churchill Lancers 925	Molalla Indians 669
Beaverton Beavers 1311	Crater Comets 1110	North Marion Huskies 522
Jesuit Crusaders 1273	Eagle Point Eagles 894	
Mountainside Mavericks 1715	North Bend Bulldogs 665	4A-3 - Oregon West Conference (7)
Southridge Skyhawks 1279	North Eugene Highlanders 856	Cascade Cougars 636
Sunset Apollos 1963	Springfield Millers 1132	Newport Cubs 546
Westview Wildcats 2274	Thurston Colts 1104	Philomath Warriors 472
	Willamette Wolverines 1085	Sisters Outlaws 421
6A-3 - Pacific Conference (7)	5A-3 - Mid-Willamette Conference (9)	Stayton Eagles 654
Century Jaguars 1410	Central Panthers 895	Sweet Home Huskies 612
Forest Grove Vikings 1620	Corvallis Spartans 1076	Woodburn Bulldogs** 1253
Glencoe Crimson Tide 1338	Crescent Valley Raiders 857	
Liberty Falcons 1356	Dallas Dragons 778	4A-4 - Sky Em League (6)
McMinnville Grizzlies 1854	Lebanon Warriors 1130	Cottage Grove Lions 639
Newberg Tigers 1454	North Salem Vikings** 1490	Elmira Falcons 361
Sherwood Bowmen 1578	Silverton Foxes 1198	Junction City Tigers 502
	South Albany Red Hawks 1254	Marist Catholic Spartans 430
6A-4 - Mt. Hood Conference (9)	West Albany Bulldogs 1158	Marshfield Pirates 664
Barlow Bruins 1481		Siuslaw Vikings 333
Centennial Eagles 1438	5A-4 - Intermountain Conference (6)	
Central Catholic Rams* 839	Crook County Cowboys 706	4A-5 - Skyline Conference (6)
Clackamas Cavaliers 2370	Hood River Valley Eagles 1189	Henley Hornets 596
David Douglas Scots 2332	Pendleton Buckaroos 738	Hidden Valley Mustangs 536
Gresham Gophers 1270	Redmond Panthers 795	Klamath Union Pelicans 581
Nelson Hawks NEW	Ridgeview Ravens 870	Mazama Vikings 622
Reynolds Raiders 2122	The Dalles Riverhawks 716	North Valley Knights 424
Sandy Pioneers 1199		Phoenix Pirates 577
6A-5 - Three Rivers League (8)		
Canby Cougars 1277		4A-6 - Greater Oregon League (4)
Lake Oswego Lakers 1238		Baker Bulldogs 406
Lakeridge Pacers* 1203		La Grande Tigers 595
Oregon City Pioneers 1859		McLoughlin Pioneers 405
St. Mary's Academy Blues 1342		Ontario Tigers 538
Tigard Tigers 1637		
Tualatin Timberwolves 1790		
West Linn Lions 1830		
6A-6 - Mountain Valley Conference (9)		
Bend Lava Bears 1523		
Caldrea Wolfpack NEW		
McKay Scots 1793		
McNary Celtics 1763		
Mountain View Cougars 1211		
South Salem Saxons 1812		
Sprague Olympians 1510		
Summit Storm 1626		
West Salem Titans 1534		
6A-7 - Southwest Conference (6)		
Grants Pass Cavemen 1674		
North Medford Black Tornado 1514		
Roseburg Indians 1376		
Sheldon Irish 1280		
South Eugene Axe 1416		

KEY	
Denotes approved play up request	*
Denotes approved petition to play down	**
Denotes geographical exception	***



OnPoint Signature Visa® with Cash Back Rewards

2% cash back makes
great purchases even greater.

2% cash back

OnPoint Signature Visa® with Cash Back Rewards empowers you to earn 2% cash back with every purchase.

Low rate

2.99% introductory APR (annual percentage rate) for the first 6 months. Then, as low as 10.00% variable APR.²

\$100 bonus¹

Get a \$100 bonus when you spend at least \$1,000 on your new card within the first 90 days.

No annual fee

There's no cap on how much you can earn with cash back rewards and no annual fee.

Visit onpointcu.com today!

All OnPoint credit cards are subject to credit approval. The credit union makes loans and extends credit without regard to race, color, religion, national origin, sex, handicap, or familial status. Credit card benefits such as "Rewards" are not deposits of OnPoint Community Credit Union, are not insured by the NCUA and are not guaranteed by OnPoint Community Credit Union.

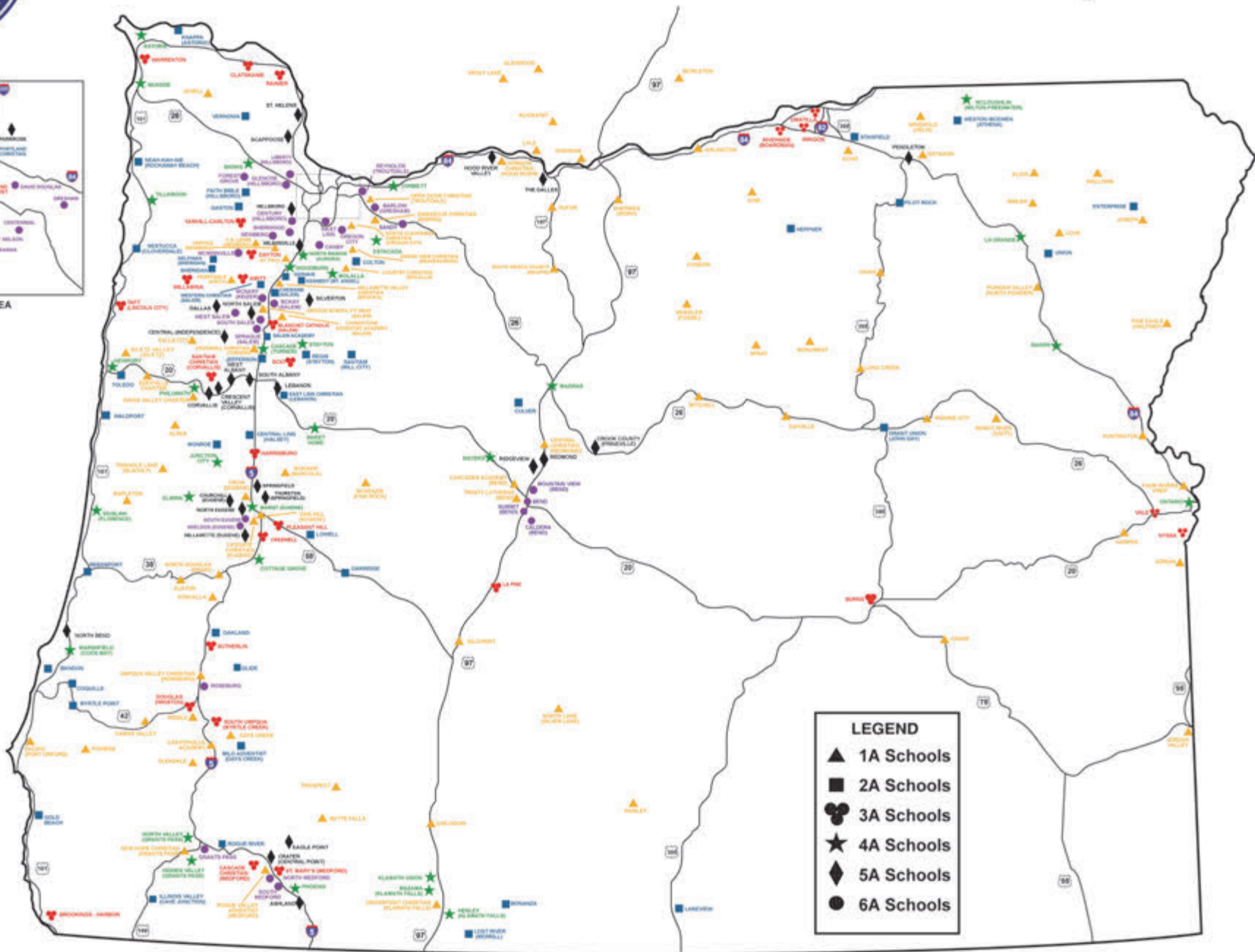
Signature Visa with Cash Back Rewards

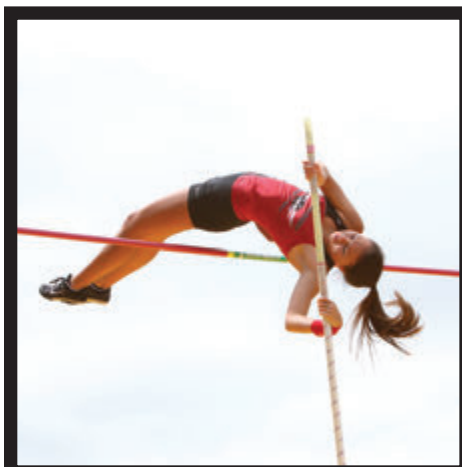
1. To earn the \$100 bonus this must be a new Visa relationship. Bonus does not apply to existing Visa loans that are transferred or converted to a Signature Visa with Cash Back Rewards card. To qualify for a Signature Visa with Cash Back Rewards card you must maintain qualifications for OnPoint Bundle Rewards. To qualify for Bundle Rewards you must be an existing member of OnPoint Community Credit Union. If you are an existing OnPoint member and you do not yet have Bundle Rewards, please visit your nearest branch or go to onpointcu.com/rates-rewards/bundle-rewards to see if you qualify. Cash back rewards are credited annually in November to your open OnPoint checking account. If you close your OnPoint checking account before rewards are paid, even if your Signature Visa with Cash Back Rewards loan is active, you will forfeit your rewards for that year. To be eligible for this bonus offer, credit card account must be open and not in default at the time of fulfillment. All terms, including APRs and fees, may change as permitted by law and the OnPoint Visa Signature Credit Card Agreement. For more information regarding all the extra benefits offered, view the OnPoint Signature Visa with Rewards Guide to Benefits.

2. After first 6 months of introductory APR, the rate will be between 10.00% - 14.50% depending on your creditworthiness.



2021-22 Membership





The OSAA Foundation Congratulates all OSAA Participants



To help ensure the Future of these Student Athletes and their Activities,
contact the OSAA Foundation to see how you can help today. www.osaafoundation.org

**OSAA REGULAR DISTRICTS
2021-22
(includes Adjusted 2019-20 ADM)**

3A (34)	2A (47)	1A (90)	1A (cont.) (89-)
3A-1 - Lewis & Clark League (7)	2A-1 - Northwest League (9)	1A-1 - The Valley 10 League (10)	1A-5 - Mountain Valley League (11)
Catlin Gabel Eagles 318	Columbia Christian Knights 89	Country Christian Cougars 56	Butte Falls Loggers 49
De La Salle North Catholic Knights 273	Faith Bible Falcons 188	Damascus Christian Eagles 69	Cascades Academy Steelhead 42
Horizon Christian Hawks (TUAL)* 123	Gaston Greyhounds 172	Grand View Christian Eagles 62	Central Christian Tigers 56
Oregon Episcopal Aardvarks 311	Knappa Loggers 120	Life Christian Lions 36	Chiloquin Panthers 56
Portland Adventist Cougars 216	Mannahouse Christian Academy Lions 109	North Clackamas Christian Saints 63	Crosspoint Christian Warriors 88
Riverdale Mavericks 257	Neah-Kah-Nie Pirates 218	Open Door Christian Huskies 56	Gilchrist Grizzlies 38
Westside Christian Eagles 185	Nestucca Bobcats 142	Southwest Christian Wildcats 39	North Lake Cowboys 62
	Portland Christian Royals 166	St. Stephens Academy 50	Paisley Broncos 27
	Vernonia Loggers 149	Trinity Academy Thunder 53	Prospect Cougars 48
		Valor Christian Knights 36	Rogue Valley Adventist Red Tail Hawks 42
			Trinity Lutheran Saints 71
3A-2 - PacWest Conference (5)	2A-2 - Tri-River Conference (10)	1A-2 - Casco League (10)	1A-6 - Big Sky League (17)
Amity Warriors 224	Chemawa Braves** 231	C.S. Lewis Watchmen 28	Arlington Honkers 50
Blanchet Catholic Cavaliers 173	Colton Vikings 179	Crosshill Christian Eagles 91	Bickleton Pirates 35
Dayton Pirates 274	Culver Bulldogs 167	Falls City Mountaineers 58	Condon Blue Devils 34
Scio Loggers 218	Delphian School Dragons 139	Jewell Bluejays 37	Dufur Rangers 86
Yamhill-Carlton Tigers 254	Gervais Cougars** 263	Livingstone Adventist Academy Lions 58	Echo Cougars 65
	Kennedy Trojans 168	Oregon School f/t Deaf Panthers 49	Glenwood Eagle 18
	Salem Academy Crusaders 161	Perrydale Pirates 87	Horizon Christian Hawks (HR) 46
	Santiam Wolverines 161	St. Paul Buckaroos 92	Ione Cardinals 58
	Sheridan Spartans 185	Veritas School Vanguard 50	Klickitat Vandals 19
	Western Christian Pioneers 71	Willamette Valley Christian Warriors 60	Lyle Cougars 61
			Mitchell Loggers 18
			Sherman Huskies 68
			South Wasco County Redsides 64
			Spray Eagles 26
			Trout Lake Mustangs 64
			Wheeler Falcons 11
			Wishram Indians 23
3A-3 - Coastal Range League (5)	2A-3 - Central Valley Conference (8)	1A-3 - Mountain West League (10)	1A-7 - Old Oregon League (9)
Clatskanie Tigers 198	Central Linn Cobras 194	Asea Wolverines 38	Cove Leopards 81
Rainier Columbians 223	East Linn Christian Eagles 125	Crow Cougars 72	Elgin Huskies 98
Taft Tigers 391	Jefferson Lions** 228	Eddyville Charter Eagles 55	Griswold Grizzlies 42
Warrenton Warriors 221	Lowell Devils 104	Kings Valley Charter Eagles 49	Imbler Panthers 74
Willamina Bulldogs 211	Monroe Dragons 102	Mapleton Sailors 39	Joseph Eagles 65
	Oakland Oakers 167	McKenzie Eagles 55	Nixyaawii Eagles 72
	Oakridge Warriors 133	Mohawk Mustangs 87	Pine Eagle Spartans 53
	Regis Rams 101	Oak Hill School Falcons 38	Powder Valley Badgers 71
		Siletz Valley Warriors 64	Wallowa Cougars 56
		Triangle Lake Lakers 55	
3A-4 - Mountain Valley Conference (5)	2A-4 - Sunset Conference (7)	1A-4 - Skyline League (11)	
Creswell Bulldogs 306	Bandon Tigers 170	Camas Valley Hornets 62	
Harrisburg Eagles 242	Coquille Red Devils 204	Days Creek Wolves 64	
La Pine Hawks 387	Gold Beach Panthers 129	Elkton Elks 75	
Pleasant Hill Billies 295	Myrtle Point Bobcats 107	Glendale Pirates 82	
Santiam Christian Eagles 230	Reedsport Brave 148	New Hope Christian Warriors 43	
	Toledo Boomers 183	North Douglas Warriors 82	
	Waldport Irish 159	Pacific Pirates 39	
3A-5 - Far West League (6)	2A-5 - Southern Cascade League (6)		
Brookings-Harbor Bruins*** 428	Bonanza Antlers 97		
Cascade Christian Challengers 205	Glide Wildcats 193		
Douglas Trojans 322	Illinois Valley Cougars** 242		
South Umpqua Lancers 338	Lakeview Honkers 197		
St. Mary's Crusaders 330	Lost River Raiders 109		
Sutherlin Bulldogs 333	Rogue River Chieftains** 190		
3A-6 - Eastern Oregon League (6)	2A-6 - Blue Mountain Conference (7)		
Burns Hilanders 210	Enterprise Outlaws 129		
Irrigon Knights 202	Grant Union Prospectors 152		
Nyssa Bulldogs 263	Heppner Mustangs 97		
Riverside Pirates 235	Pilot Rock Rockets 85		
Umatilla Vikings 323	Stanfield Tigers 139		
Vale Vikings 235	Union Bobcats 107		
	Weston-McEwen Tiger Scots 169		

School with no Regular District Affiliation
Milo Adventist Mustangs 109



www.sportlighting.com



Official Sports Lighting Provider of the OSAA



For more than 20 years, Techline Sports Lighting has been a leader in sports lighting solutions. Our LED technology dramatically improves light levels on the field, eliminates glare and spill concerns, reduces energy consumption by 60-80%, and frees up operating budget by removing ALL owners' maintenance costs. Contact Us for a no cost consultation and/or proposal.

Cody Lunsford
Regional Vice President
cody@sportlighting.com

(512) 736-4794
(800) 500-3161

BANDON

School League Bandon High School (Bandon)
Principal 2A/1A-SD3 Special District 3
Director Melissa Radcliffe
Accompanist Dave Weston
Performers 13
Selection 1 *Little Wheel A-Turnin'*, Greg Gilpin (Shawnee Press)
Selection 2 *Kyrie*, Sonja Poorman (BriLee Music)
Selection 3 *Tshepa Thapelo*, Ruth Morris Gray (Alfred)
Selection 4 *Cool Moon*, Richard A. Williamson (Heritage)
Selection 5 *Goblin Feet*, Larry Shackley (Heritage)

DELPHIAN

School League Delphian School (Sheridan)
Principal 2A/1A-SD1 Special District 1
Director Trevor Ott
Accompanist Craig Baidar
Soloists Dana Libonati, Emiliano Chaparro, and Bruce Liu
Performers Arwen Croman, Ananya Tare, Felix Forslund, and Elijah Ward
Selection 1 40
Selection 2 *Jubilant Day*, Judy A. Rose (Santa Barbara)
Selection 3 *Sanctus*, Mozart (Hal Leonard)
Selection 4 *Earth Song*, Frank Ticheli (Hindon Publication)
Selection 5 *O Occhi, Manza Mia*, Orlando di Lasso (CPDL)
Baba Yetu, Christopher Tin (Hal Leonard)

CANBY

School League Canby High School (Canby)
Principal 6A-5 Three Rivers League
Director Greg Dinse
Soloist Brooks Gingerich
Performers Matthew Solem
Selection 1 81
Selection 2 *Mitten Wir Im Lebend Sind*, Mendelssohn (CPDL)
Selection 3 *Entreat Me Not To Leave You*, Forrest (Hinshaw)
Dixit In Corde Suo, Gyöngyösi (Kontrapunkt Music Ltd)

DOUGLAS

School League Douglas High School (Winston)
Principal 3A-SD3 Special District 3
Director Craig Anderson
Accompanist Hannah Abercrombie
Soloists Kaitlynn Pruitt
Performers Emily Smalley, Dusty Thompson, and Shayln Sheppard
Selection 1 13
Selection 2 *El Grillo*, Josquin des Prez (Lawson-Gould)
Selection 3 *Sing Gently*, Eric Whitacre (Hal Leonard)
Selection 4 *Dies Irae*, Michael John Trotta (Hampton Roads)
Selection 5 *Cool Moon*, Richard A. Williamson (Heritage)
Death Came A-Knockin', Ruthie Foster, arr. Paul Rardin (Galaxy Music)

CENTRAL

School League Central High School (Independence)
Principal 5A-3 Mid-Willamette Conference
Director Donna Servignat
Accompanist Jeffrey D Witt
Performers Jon Stuber
Selection 1 43
Selection 2 *Sicut Locutus Est*, Johann Sebastian Bach (Hal Leonard)
Selection 3 *Calme des nuits*, Camille Saint-Saëns (Cantate Music)
Selection 4 *Can We Sing the Darkness to Light?*, Kyle Pederson (Walton)
A Hoopla, Libby Larsen (E.C. Schirmer Music Co.)

ESTACADA

School League Estacada High School (Estacada)
Principal 4A-2 Tri-Valley Conference
Director Amy Hudson
Accompanist Rendell Frunk
Performers Boston Jackson
Selection 1 37
Selection 2 *Ngothando*, Mbuso Ndlovu (Walton)
Selection 3 *Wille Taylor*, Arr. Stephen Hatfield (Boosey & Hawkes)
Selection 4 *O Love*, Elaine Hagenburg (Becknehorst Press)
John Henry, Arr. Andre J. Thomas (Heritage)

CROSSPOINT CHRISTIAN

School League Crosspoint Christian School (Klamath Falls)
Principal 2A/1A-SD3 Special District 3
Director Dan Conrad
Accompanist Dan Crenshaw
Performers 21
Selection 1 *Skye Boat Song*, Jay Althouse (Alfred)
Selection 2 *Behold How Good*, Michael John Trotta (MorningStar Music Publishers)
Selection 3 *If Ye Love me*, Thomas Tallis (CPDL)
Selection 4 *Praise His Holy Name*, Keith Hampton (Earthsongs)

FRANKLIN

School League Franklin High School (Portland)
Principal 6A-1 Portland Interscholastic League
Director Chris Frazier
Accompanist Karen Bohart
Soloists Janet Craswell
Performers Amelia Dusevoir, Vetiver Long, and Evan Lewis
Selection 1 36
Selection 2 *Tyger*, Elaine Hagenberg (Elaine Hagenberg Music)
Selection 3 *Verleih Uns Frieden*, Felix Mendelssohn (CPDL James Gibb Edition)
Selection 4 *Fengyang Song*, Chen Yi (Theodore Presser Company)
Selection 5 *The Road Home*, Stephen Paulus (Paulus Publications)
Dulaman, Michsel McGlynn (Michael McGlynn)

DAVID DOUGLAS

School League David Douglas High School (Portland)
Principal 6A-4 Mt. Hood Conference
Director Greg Carradine
Accompanist Christopher Silva
Soloists Michelle Collins
Performers Pamela Dikova and Qualiyah Hunter
Selection 1 54
Selection 2 *Zigeunerleben*, Robert Schumann (CPDL)
Selection 3 *Please Stay*, Jake Runestad (JRMusic)
City Called Heaven, arr. Josephine Poelinitz (Colla Voce)

GRANT

School League Grant High School (Portland)
Principal 6A-1 Portland Interscholastic League
Director James McGee
Accompanist John Eisemann
Performers 72
Selection 1 *Alleluia*, Elaine Hagenberg (Elaine Hagenberg Music)
Selection 2 *Emendemus in melius*, William Byrd (CPDL)
Selection 3 *Vulindlela*, Brenda Fassie, arr. E. Roux (Self Published by the Arranger)
Selection 4 *Soon Ah Will Be Done*, Judy A. Rose (Like It Is Productions)
Selection 5 *Gaur Akelarre*, Josu Elberdin (Walton Music)

GRANTS PASS

School League Grants Pass High School (Grants Pass)
Principal 6A-7 Southwest Conference
Director Ryan Thompson
Accompanist Julie Lehnhardt
Soloists Christine Morrison
Performers Carson Morrison, Bryce Robertson, and Ella Rossiter
 22

Selection 1 *Ave Maria*, Victoria (ECS Publishing Group)
Selection 2 *Mikor Gulas Votlam*, Bartok (CPDL)
Selection 3 *I Want to Be Ready*, Traditional Spiritual (Prentice-Hall)
Selection 4 *How Can I Stop Singing My Song*, Cynthia Gray (Heritage)

LA GRANDE

School League La Grande High School (La Grande)
Principal 4A-6 Greater Oregon League
Director Brett Baxter
Accompanists Kevin C Durfee
Performers Lea Emerson and Kevin Durfee
 27

Selection 1 *Working for the Dawn of Peace*, Ron Jeffers (Earthsongs)
Selection 2 *Nothin' Gonna Stumble My Feet*, Greg Gilpin (Shawnee Press)
Selection 3 *O Vos Omnes*, Tomas Luis de Victoria (Hal Leonard)
Selection 4 *Vamos A Bailar*, Dan Davison (Walton)

GRESHAM

School League Gresham High School (Gresham)
Principal 6A-4 Mt. Hood Conference
Director Drake Shelton
Soloists Janine Kirstein
Performers Kyra McCloud, Emily Clark, Isaac Walker, Alex Bigham, Allie Cope, and Ben Kowalker
 53

Selection 1 *The Tyger*, Andrew Miller (Pavane Publishing)
Selection 2 *Abendstandchen*, Johannes Brahms (CPDL)
Selection 3 *O Salutaris Hostia*, Eriks Esenvalds (Musica Baltica)
Selection 4 *Balleilakka*, A.R. Rahman. arr. Ethan Sperry (Earthsongs)

LAKE OSWEGO

School League Lake Oswego High School (Lake Oswego)
Principal 6A-5 Three Rivers League
Director Kristen Colyer
Accompanist Tara Bamford
Performers 43

Selection 1 *Ta Na Solbici*, Samo Vovk (Samo Vovk)
Selection 2 *Let My Love Be Heard*, Jake Runestad (Jake Runestad Music)
Selection 3 *Locus Iste*, Anton Bruckner (CPDL)
Selection 4 *Leron, Leron Sinta*, Saunder Choi (Earthsongs)

HENLEY

School League Henley High School (Klamath Falls)
Principal 4A-5 Skyline Conference
Director Andrea Gray
Accompanist Christopher Benjamin
Soloists Mrs. Krista Beaty
Performers Alexis Johnson, Max Tobiasson, and Elijah Roeloffs
 55

Selection 1 *Dies Irae*, Michael J. Trotta (GIA Publications, INC)
Selection 2 *J'entends le moulin*, Donald Patriquin (Earthsongs)
Selection 3 *Zum Abendsegen*, Felix Mendelssohn (Kalmus)
Selection 4 *Bright Morning Star*, Fred Squatrito (Third Planet Music)
Selection 5 *My Good Lord's Done Been Here*, André J. Thomas (Heritage)

LINCOLN

School League Lincoln High School (Portland)
Principal 6A-1 Portland Interscholastic League
Director Peyton Chapman
Accompanist Lisa Riffel, Garrett Bond
Soloist Leif Olsen
Performers Richard Wen
 40

Selection 1 *Psallite*, Michael Praetorius (CPDL)
Selection 2 *Cantique de Jean Racine*, Gabriel Faure (CPDL)
Selection 3 *Zikr*, AR Rahman, arr. Ethan Sperry (Earthsongs)
Selection 4 *Sure On This Shining Night*, Morten Lauridsen (Hal Leonard)

HILLSBORO

School League Hillsboro High School (Hillsboro)
Principal 5A-1 Northwest Oregon Conference
Director Dave Vickery
Accompanist Benjamin Noyes
Performers 46

Selection 1 *When Allen-a-Dale Went a-Hunting*, Pearsall (CPDL)
Selection 2 *O Magnum Mysterium*, Victoria (CPDL)
Selection 3 *Ka Hla Manu*, Hatfield (Boosey & Hawkes)

LOWELL

School League Lowell High School (Lowell)
Principal 2A/1A-SD2 Special District 2
Director Scott Yakovich
Accompanists Paul Burch
Performers Sarah Burch, Elizabeth Able, and Deacon Savio
 25

Selection 1 *Song of the Sea*, Hannisian (Alfred)
Selection 2 *Keep Your Lamps Trimmed and Burnin'*, arr. Gilpin (Colla Voce)
Selection 3 *Shenandoah*, arr. Spevacek (Hal Leonard)
Selection 4 *Fa Una Canzona*, Vecchi (Alfred)
Selection 5 *Tshotsholoza*, arr. Ames (Walton)

HOOD RIVER VALLEY

School League Hood River Valley High School (Hood River)
Principal 5A-4 Intermountain Conference
Director Columba Jones
Accompanist Dan Kenealy
Soloist Kaitlyn Armerding
Performers Emma Cervantes
 25

Selection 1 *Lebenslust*, Franz Schubert (CPDL)
Selection 2 *A Red, Red Rose*, James Mulholland (EAMC)
Selection 3 *Locus Iste*, Anton Bruckner (CPDL)
Selection 4 *Son de Camaguey*, Cuban Folk Song arr. Stephen Hatfield (Boosey & Hawkes)
Selection 5 *Tshotsholoza*, Traditional South African arr. Jeffrey Ames (Walton)

MCKAY

School League McKay High School (Salem)
Principal 6A-6 Mountain Valley Conference
Director Ranae Quiring
Accompanist Peter Sepulveda
Performers Adam Robinson
 48

Selection 1 *Jubilate Deo*, Peter Anglea (Hinshaw)
Selection 2 *I Have Longed For Thy Saving Health*, William Byrd (Alfred)
Selection 3 *Omnis Una from Gloria Patri*, Urmas Sisask (Fennica Gehrman)
Selection 4 *When the Earth Stands Still*, Don Macdonald (Galaxy Music Corporation)
Selection 5 *Walk Out on the Water*, Royal Canoe, arr. Geung Kroecker-Lee (Cypress Choral Music)

McLOUGHLIN

School McLoughlin High School (Milton-Freewater)
League 4A-6 Greater Oregon League
Principal Mario Uribe Saldana
Director Melissa cunnington
Accompanist Jennie Pulliam
Soloists Hunter Brown, Kadey Brown, and Jayden Dawson
Performers 25
Selection 1 *Wangol*, Sten Kallman (Walton)
Selection 2 *O Shone Nacht*, Johannes Brahms (CPDL)
Selection 3 *Bullerengue*, Jose Rincon (Third Planet Music)
Selection 4 *Les Fleurs Et Les Arbres*, Saint Saens (CPDL)
Selection 5 *Wade In The Water*, John Conohan (Hal Leonard)
Selection 6 *Desh*, Ethan Sperry, arranger (Earthsongs)

NORTH CLACKAMAS CHRISTIAN

School North Clackamas Christian High School (Oregon City)
League 2A/1A-SD1 Special District 1
Principal Sherri James
Director Rebecca Steele
Accompanists Megan Hankland and Abby Wiese
Soloists Vivienne Hodder and Breanna Steele
Performers 23
Selection 1 *Jabula Jesu*, Stephen Hatfield (Boosey and Hawks)
Selection 2 *Flight Song*, Kim Andre Arnesen (Earthsongs)
Selection 3 *Fa una canzona*, Orazio Vecchi (CPDL)
Selection 4 *Bear Me Gently*, Kinley Lange (Neil A. Kjos Music Company)
Selection 5 *Yonder Come Day*, Paul John Rudoi (Galaxy Music)

MOLALLA

School Molalla High School (Molalla)
League 4A-2 Tri-Valley Conference
Principal Brad Berzinski
Director Tim Friesen
Accompanist Roger Wilhite
Performers 19
Selection 1 *Dies Irae*, D. Farrell Smith (Carl Fischer)
Selection 2 *Carnavallito*, Will Lopes (Hal Leonard)
Selection 3 *In Stiller Nacht*, Johannes Brahms (Hal Leonard)
Selection 4 *Sigalagala*, S.A. Otieno (Earthsongs)

OREGON CITY

School Oregon City High School (Oregon City)
League 6A-5 Three Rivers League
Principal Carey Wilhelm
Director Julia Voorhies
Soloists Will Corwin and Maecy Hayden
Performers 43
Selection 1 *Alleluia*, Elaine Hagenberg (Elaine Hagenberg Music)
Selection 2 *Beati Quorum Via*, Charles Stanford (CPDL)
Selection 3 *My Love is Come to Me*, Benjamin Wegner (Benjamin Wegner)
Selection 4 *Sarba Pe Scaun*, Alexandru Pascanu (Musica Romanica)
Selection 5 *Good Night, Dear Heart*, Dan Forrest (Hinshaw)

MOUNTAIN VIEW

School Mountain View High School (Bend)
League 6A-6 Mountain Valley Conference
Principal Michael Hicks
Director Susan Evans
Accompanist Nancy Milliron
Performers 21
Selection 1 *Wayfaring Stranger*, Gwyneth Walker (E.C. Schirmer)
Selection 2 *Ave Maria*, Javier Busto (Walton)
Selection 3 *Je le vous dirai!*, Pierre Certon, edited by John Leavitt (Hal Leonard)
Selection 4 *Va Pensiero*, Giuseppe Verdi, edited Patrick M. Liebergen (Hinshaw)
Selection 5 *Stomp Your Foot*, Aaron Copland (Boosey and Hawkes)

PERRYDALE

School Perrydale High School (Amity)
League 2A/1A-SD1 Special District 1
Principal Dan Dugan
Director Misty Matthews
Accompanist Anne Britt
Soloists Mason Deters, Kathryn Clevenger, and Courtney Reed
Performers 7
Selection 1 *Dies Irae*, Ruth Morris Gray (alfred.com)
Selection 2 *Esto Les Digo*, Kinley Lange (Alliance)
Selection 3 *Il est bel et bon*, Pierre Passereau. Arrange by Lohn Leavitt (Hal Leonard)
Selection 4 *Blow, Blow, thou Winter Wind*, John Rutter (Oxford)
Selection 5 *Soran Bushi*, Japanese fold song arr. by Wendy B. Stuart (Colla Voce)
Selection 6 *Loch Lomond*, Ar: by Jonathan Quick (Cypress Choral music)

NEWBERG

School Newberg High School (Newberg)
League 6A-3 Pacific Conference
Principal Tami Erion
Director Matthew Fletcher
Soloists Oliver Hansen, RJ Tofte, Nathaniel Nauman, and Tatiana Bega
Performers 50
Selection 1 *Idumea*, Rick Bjella (AMP)
Selection 2 *Civitas Sancti Tui*, William Byrd (CPDL)
Selection 3 *Earth Song*, Frank Ticheli (Hinshaw)
Selection 4 *Weinachten*, Felix Mendelssohn (CPDL)
Selection 5 *I Am Glad*, Daniel Schreiner (Santa Barbara)

PUTNAM

School Putnam High School (Milwaukie)
League 5A-1 Northwest Oregon Conference
Principal Ryan Richardson
Director Erika Lockwood
Accompanists Kristy Moore and Aiden Schneider
Soloists Serena Mason, Rhyann Butler, Conner Hutchcraft, and Zach Stock
Performers 34
Selection 1 *Spiritual*, Ysaye Barnwell (The Musical Source)
Selection 2 *Refuge*, Elaine Hagenberg (Hinshaw)
Selection 3 *Exultate Deo*, Giovanni Pierluigi da Palestrina (CPDL)
Selection 4 *Der Gang Zum Liebchen*, Johannes Brahms (CPDL)
Selection 5 *Janger*, Budi Susanto Yohanes (Earthsongs)

NORTH BEND

School North Bend High School (North Bend)
League 5A-2 Midwestern League
Principal Darrell Johnston
Director Ken Graber
Accompanist Charlotte Pierce
Performers 39
Selection 1 *Verbum Caro Factum Est*, Hans Leo Hassler (Hall Leonard)
Selection 2 *Muusika*, Part Uusberg (Walton)
Selection 3 *TaReKiTa*, Reena Esmail (Oxford)
Selection 4 *Why I Do Not Weep*, Christopher H. Harris (MusicSpoke)
Selection 5 *Here*, Josh Rist (MusicSpoke)

RAINIER

School Rainier Jr/Sr High School (Rainier)
League 3A-SD1 Special District 1
Principal Graden Blue
Director Madison Keezer-Birmingham
Accompanist Gwen Larson
Performers 25
Selection 1 *Every Valley Needs A Lily*, arr. Stacey Nordmeyer (Shawnee Press)
Selection 2 *Little Wheel A-Turnin'*, arr. Greg Gilpin (Shawnee Press)
Selection 3 *Kyrie*, Andrea Klouse (Hal Leonard)
Selection 4 *Tuimbe*, David Waggoner (Alfred)

RIDGEVIEW

School Ridgeview High School (Redmond)
League 5A-4 Intermountain Conference
Principal Lee Loving
Director Belinda Sisson
Accompanist Jean Shrader
Performers 24
Selection 1 *Modimo*, Michael Barrett (Walton)
Selection 2 *Verleih uns Frieden*, Felix Mendelssohn (CPDL)
Selection 3 *O Love*, Elaine Hagenberg (Beckenhorst Press)
Selection 4 *Let Me Fly*, Rollo Dilworth (Hal Leonard)

SISTERS

School Sisters High School (Sisters)
League 4A-3 Oregon West Conference
Principal Steve Stancliff
Director Rick Johnson
Accompanist Julie Cash
Soloists Ryan Kissinger, Emily Huber, Blake Parker, and MacKenzie Shelswell-White
Performers 30
Selection 1 *Now I Walk in Beauty*, Gregg Smith (G. Schirmer)
Selection 2 *Homeward Bound*, Marta Keen (Alfred Publishing Co, Inc.)
Selection 3 *Ave Verum Corpus*, W.A. Mozart (G. Schirmer)
Selection 4 *She Walks in Beauty*, David Foltz (Alfred Publishing Co, Inc.)
Selection 5 *Lift Me Up*, Andy Beck (Alfred Publishing Co, Inc.)

ROSEBURG

School Roseburg High School (Roseburg)
League 6A-7 Southwest Conference
Principal Jill Weber
Director Julie Cherry
Accompanist Tammy Johnson
Soloists Charis Sensabaugh, Timea Anderson, Ryder Pier, Tucker Thompson, Emma Bain, and Olivia Gwaltney
Performers 24
Selection 1 *Regina Coeli*, W.A. Mozart (G. Schirmer)
Selection 2 *Sing Me to Heaven*, Daniel Gawthrop (Dunstan House)
Selection 3 *Death Came A-Knockin' (Travelin' Shoes)*, Ruthie Foster, arr. Paul Rardin (Galaxy Music Corporation)
Selection 4 *J'entend le Moulin*, arr. Michael Snelgrove (Cyprus Choral Music)

SOUTH ALBANY

School South Albany High School (Albany)
League 5A-3 Mid-Willamette Conference
Principal John Hunter
Director Brett DeYoung
Accompanist Vickie Sparks
Soloists Jonah Southwick and Ashton Warren
Performers 40
Selection 1 *Animal Crackers, Vol. 1*, Eric Whitacre (Shadow Water)
Selection 2 *Vere Languores*, Tomas Luis de Victoria (Hal Leonard)
Selection 3 *Esta Tierra*, Javier Busto (Walton)
Selection 4 *Balleilakka*, A. R. Rahman, arr. Ethan Sperry (Earthsongs)

SALEM ACADEMY

School Salem Academy (Salem)
League 3A-SD2 Special District 2
Principal Lindsay Brownell
Director Kent Wilson
Accompanist Rachael Loop
Performers 25
Selection 1 *If Ye Love Me*, Thomas Tallis; Arr. Victoria Glaser (Schirmer)
Selection 2 *Come Travel With Me*, Scott Farthing (Walton/GIA)
Selection 3 *Bring Me Little Water*, Silvy, Huddie Ledbetter; Arr. Greg Gilpin (Choristers Guild)
Selection 4 *The Rainy Day*, Kenneth Riggs (Heritage)
Selection 5 *Dies Irae*, Arr. Ryan Main (Ryan Main)
Selection 6 *The Seal Lullaby*, Eric Whitacre (Hal Leonard)

SOUTH MEDFORD

School South Medford High School (Medford)
League 6A-7 Southwest Conference
Principal Jeremy Hamasu
Director Andrea Brock
Accompanist Jodi French
Soloists Sara Glauser, Nicolas Budde, Daschel Bender, Crystal Phillips, and Shayne Lequieu
Performers 29
Selection 1 *Volta do mar Largo*, Paul Jarman (Mark O'Leary Music Publishing)
Selection 2 *O Magnum Mysterium*, Tomas Luis de Victoria (CPDL)
Selection 3 *I'm Gonna Sing 'Til the Music Moves in My Heart*, Moses Hogan (Hal Leonard)
Selection 4 *I'll Be On My Way*, Shawn Kirchner (www.ShawnKirchner.com)

SEASIDE

School Seaside High School (Seaside)
League 4A-1 Cowapa League
Principal Jeff Roberts
Director Kimber Parker
Accompanist Susan Buehler
Performers 43
Selection 1 *Zion's Walls*, Aaron Copland, arr. Glenn Koponen (Boosey & Hawkes)
Selection 2 *Lunar Lullaby*, Jacob Narverud (Santa Barbara)
Selection 3 *Psallite, Unigenito*, Michael Praetorius (CPDL)
Selection 4 *Tarekita*, Reena Esmail (Oxford University Press)
Selection 5 *Jubilate Deo*, Peter Anglea (Hinshaw)

SOUTH SALEM

School South Salem High School (Salem)
League 6A-6 Mountain Valley Conference
Principal Lara Tiffin
Director Aubrey Dunham
Accompanists Vibes and Brady Howell
Soloists Maisy Fisher and Grace Mowbray
Performers 38
Selection 1 *Non Nobis, Domine*, Rosephanye Powell (Gentry Publications)
Selection 2 *Selene's Boat*, Don Macdonald (Mark Foster Music)
Selection 3 *Mille Regrets*, Josquin des Prez (CPDL)
Selection 4 *Bend*, Kyle Pederson (Galaxy Music)
Selection 5 *Unclouded Day*, arr. Shawn Kirchner (Boosey & Hawkes)

SHERWOOD

School Sherwood High School (Sherwood)
League 6A-3 Pacific Conference
Principal Adam Mitchell
Director Kathy Shuckerow
Accompanists Hannah Simpson and Tala Dababneh
Soloists Oscar Giles, Brady Koch, Ellise Newton, Kaitlyn Baggaley, Laura Johnson, Clarie Shipman, Madeline Green, and Jenny Kroon
Performers 46
Selection 1 *Baba Yetu*, Christopher Tin, arr. Roger Emerson (Hal Leonard)
Selection 2 *Sicut Cervus*, Giovanni Palestrina (Theodore Presser Company)
Selection 3 *For This Joy*, Susan LaBarr (Walton)
Selection 4 *Jai Ho!*, A. R. Rahman, arr. Ethan Sperry (Earthsongs)

SOUTHRIDGE

School Southridge High School (Beaverton)
League 6A-2 Metro League
Principal David Nieslanik
Director Anna Rikii
Soloists Hailey Rydman and Moises Ortiz
Performers 33
Selection 1 *Ambe*, Campbell and Balfour (Cypress)
Selection 2 *O Magnum Mysterium*, César Alejandro Carrillo (Earthsongs)
Selection 3 *Sing, My Child*, Sarah Quartel (Oxford)
Selection 4 *Lob des Frühlings*, Felix Mendelssohn (CPDL)
Selection 5 *Roll, Jordan, Roll*, Stacey Gibbs (Gentry)

SOUTHWEST CHRISTIAN

School	Southwest Christian High School (Beaverton)
League	2A/1A-SD1 Special District 1
Principal	Mark Sherman
Director	Joy Tovar
Accompanist	Jamie Barter
Soloists	Kalana Hostetler and Kaci Bowman
Performers	13
Selection 1	<i>Amen! Tell It On the Mountain!</i> , Traditional Spiritual, Arr. Mary McDonald (Lorenz)
Selection 2	<i>In Stiller Nacht</i> , H.T. Duffeld, Johannes Brahms, Arr. David L. Weck (Somerset Press)
Selection 3	<i>Kyrie Eleison</i> , Dana Mengel (Harold Flammer Music)
Selection 4	<i>Bonse Aba</i> , Traditional Zambian Folk Song, Arr. Victor C. Johnson (Heritage)
Selection 5	<i>We Are Not Alone</i> , Pepper Choplin (Harold Flammer Music)

TIGARD

School	Tigard High School (Tigard)
League	6A-5 Three Rivers League
Principal	Brian Bailey
Director	Robert Hawthorne
Accompanist	Jeff Wood
Soloists	Maria Castenada Cruz, Vivian To, and Aubrey Tingey
Performers	41
Selection 1	<i>Hohonolofatsa</i> , arr. Daniel Jackson (Walton)
Selection 2	<i>Napadly pisne</i> , Antonin Dvorak (Earthsongs)
Selection 3	<i>Gloria in excelsis Deo</i> , Josef Haydn (Earthsongs)
Selection 4	<i>The Rising</i> , Andrea Ramsey (MusicSpoke)
Selection 5	<i>Il est bel et bon</i> , Pierre Passereau (GSchirmer)

SPRAGUE

School	Sprague High School (Salem)
League	6A-6 Mountain Valley Conference
Principal	Chad Barks
Director	David Brown
Accompanist	Tracy Bybee
Performers	38
Selection 1	<i>Music In the Air</i> , Ryan Murphy (Walton)
Selection 2	<i>Ne Irascaris Domine</i> , William Byrd (CPDL)
Selection 3	<i>Die Mainacht</i> , Johannes Brahms (Galaxy Music)
Selection 4	<i>Remember</i> , Ivo Antognini (Alliance)
Selection 5	<i>Leron, Leron Sinta</i> , Sauder Choi (Earthsongs)

TRINITY LUTHERAN

School	Trinity Lutheran High School (Bend)
League	2A/1A-SD2 Special District 2
Principal	David Haynes
Director	Jonathan Vevia
Accompanist	Carol Podwils
Soloists	Julia Hutchison, Isaac Feeney, Elli Kent, and Selah Hoole
Performers	50
Selection 1	<i>Praise the Lord</i> , arr. Ralph Johnson (Earthsongs)
Selection 2	<i>Dies Irae</i> , Ryan Main (Ryan Main Music)
Selection 3	<i>The Cuckoo</i> , arr. Robert I. Hugh (Hal Leonard)
Selection 4	<i>City Called Heaven</i> , arr. Josephine Poelinitz (Colla Voce)
Selection 5	<i>Praise His Holy Name</i> , Keith Hampton (Earthsongs)

ST. HELENS

School	St. Helens High School (St Helens)
League	5A-1 Northwest Oregon Conference
Principal	Dr. Katy Wagner
Director	Eric Stearns
Performers	47
Selection 1	<i>Tshotsoloza</i> , Ames (Walton)
Selection 2	<i>If Ye Love Me</i> , Tallis (CPDL)
Selection 3	<i>Miniyama Nayo</i> , Rudoi (Walton)
Selection 4	<i>All Too Soon</i> , Hatfield (Boosey & Hawkes)
Selection 5	<i>Good Night Dear Heart</i> , Forrest (Hinshaw)

VERITAS

School	Veritas School (Newberg)
League	2A/1A-SD1 Special District 1
Principal	Bryan Lynch
Director	Sally Mehler
Soloists	Tristan Rickert, Oliver Williamson, David Miller, Isabelle Yoon, Anna Natzke, Alexander Aguilar, Adam Rapp, and Thomas Rahkola
Performers	21
Selection 1	<i>The Word Was God</i> , Rosephanye Powell (Hal Leonard)
Selection 2	<i>God is Our Refuge and Strength</i> , W.A. Mozart (CPDL)
Selection 3	<i>23rd Psalm</i> , Bobby McFerrin (Lindalamama)
Selection 4	<i>Wayfaring Stranger</i> , Moira Smiley (moirasmiley.com)
Selection 5	<i>Hlononofatsa</i> , Arr. Daniel Jackson (Walton)
Selection 6	<i>Dulaman</i> , Michael McGlynn (Warner Chappell Music)

ST. MARY'S ACADEMY

School	St. Mary's Academy (Portland)
League	6A-5 Three Rivers League
Principal	Nicole Foran
Director	Kathy Briggs
Accompanist	Ashley McCullar
Soloists	Joey Rea, Beatrice Hughes, Grace Fall, Aster Parkin, Sophia Nilsson, and Lucy Johnson
Performers	55
Selection 1	<i>Er ist Gekommen in Sturm und Regen</i> , Clara Schumann, arr. Brandon Williams (G. Schirmer)
Selection 2	<i>El Romantón</i> , Francisco Muro, arr. Miguel Astor (Earthsongs)
Selection 3	<i>Song of Miriam</i> , Elaine Hagenberg (Elaine Hagenberg Music)
Selection 4	<i>Malala</i> , Joan Szymko (Joan Szymko)
Selection 5	<i>Faith is the Bird that Feels the Light</i> , Elizabeth Alexander (Seafarer Press)

WEST LINN

School	West Linn High School (West Linn)
League	6A-5 Three Rivers League
Principal	Trevor Menne
Director	Aubrey Patterson
Accompanist	Rob Fishel
Soloists	Karah Rhoades and Ava Wagner
Performers	57
Selection 1	<i>The Prow</i> , Matthew Lyon Hazzard (Lyon Hazzard)
Selection 2	<i>Resta di darmi noia</i> , Carlo Gesualdo (CPDL)
Selection 3	<i>and the swallow</i> , Caroline Shaw (Caroline Shaw Editions)
Selection 4	<i>Kruhay</i> , Sir Benny Castillon (Dom Otto Asis Choral Music Publications)

SUMMIT

School	Summit High School (Bend)
League	6A-6 Mountain Valley Conference
Principal	Michael McDonald
Director	Melissa Jacot
Accompanist	Nancy Milliron
Soloists	Bella Morton and Shea Miller
Performers	30
Selection 1	<i>The Water is Wide</i> , Folk Song (Alfred)
Selection 2	<i>The Cuckoo</i> , Folk Song (Hal Leonard)
Selection 3	<i>Rhythm of Life</i> , Dorothy Fields, Cy Coleman (Shawnee Press)
Selection 4	<i>Nine Hundred Miles</i> , Folk Song (Choristers Guild)
Selection 5	<i>Daemon Irrepiit Callidus</i> , György Orbán (Hinshaw)

WEST SALEM

School	West Salem High School (Salem)
League	6A-6 Mountain Valley Conference
Principal	Carlos Ruiz
Director	Cole Haoie-Valenzuela
Accompanist	Devin Desmond
Soloists	Evyn Baker, Sterling Barnes, and Jaimon Chaney
Performers	43
Selection 1	<i>Exsultate justi</i> , Ludovico da Viadana (CPDL)
Selection 2	<i>Die Mainacht</i> , Johannes Brahms arr. James McCullough (Galaxy Music Corporation)
Selection 3	<i>Miniyama Nayo</i> , Paul John Rudoi (Walton)
Selection 4	<i>When We Love</i> , Elaine Hagenberg (Elaine Hagenberg Music)
Selection 5	<i>Twa Tanbou</i> , Sydney Guillaume (Walton)

WESTSIDE CHRISTIAN

School Westside Christian High School (Tigard)
League 3A-SD1 Special District 1
Principal John Hynes
Director Will Fox
Accompanist Ryan DeHaven
Performers 42
Selection 1 *Dies Irae*, Ryan Main (Ryan Main)
Selection 2 *If ye love me*, Thomas Tallis (CPDL)
Selection 3 *I Want to Live with God*, Salone Clary (GIA Publications)
Selection 4 *Make Me An Instrument of Thy Peace*, Mary McDonald (Monarch Music)
Selection 5 *Umlalalela*, Michael Barrett (Santa Barbara)

WESTVIEW

School Westview High School (Portland)
League 6A-2 Metro League
Principal Matthew Pedersen
Director Kevin Wong
Accompanist Jaeheon Bang
Performers 48
Selection 1 *Leron, Leron Sinta*, Saunder Choi (Earthsongs)
Selection 2 *The Music of Stillness*, Elaine Hagenberg (Oxford University Press)
Selection 3 *Amor De Mi Alma*, Z. Randall Stroope (Walton)
Selection 4 *Will the Circle Be Unbroken*, J. David Moore (Fresh Ayre Music)

WILLAMETTE

School Willamette High School (Eugene)
League 5A-2 Midwestern League
Principal Dan Hedberg
Director Kathryn Morrow
Accompanists Margaret Gowen Gates, Casey Bedney, and Evan Furrow
Soloists Elle Krebs, Adelaide Lake, Destiny Wilkinson, Elise Aylworth, and Grace Savage
Performers 32
Selection 1 *The Silver Swan*, Gibbons (CPDL)
Selection 2 *Sweet Rivers*, Reginald Unterseher (Oxford University Press)
Selection 3 *I Got a Home in a Dat Rock*, Stacey Gibbs (Santa Barbara)
Selection 4 *Papa Loko*, Sten Kallman (Earthsongs)

WILSONVILLE

School Wilsonville High School (Wilsonville)
League 5A-1 Northwest Oregon Conference
Principal Kelly Schmidt
Director Annie Kubitschek
Performers 33
Selection 1 *Ani Ma'Amin*, arr. Stephen Coker (Pavane Publishing)
Selection 2 *Mighty Flame Dharani*, Reed Criddle (Earthsongs)
Selection 3 *In Manus Tuas*, John Sheppard (Hal Leonard)
Selection 4 *Look Out Above*, Dessa & Jocelyn Hagen (Graphite Publishing)



nike.com

MORE FUN

Capable SUVs, stylish cars,
rugged trucks – there's a
Toyota that's ready for
whatever you're up to.
Check out our lineup to
find the right fit for your
lifestyle.



TOYOTA

TOYOTA.COM

Prototypes shown with options. Extra-cost color shown.
Off-roading is inherently dangerous. Abusive use may
result in bodily harm or vehicle damage. Wear seat belts
at all times and do not allow passengers in cargo area.

OSAA Choir Championships

State Champions and 2nd Place

Year	Class	State Champion	Score	Director	2 nd Place	Score	Director	Site
1987	AAA AA A/B	South Salem The Dalles Columbia Christian		Loren Wenz Lloyd Walworth Debra Weldon	Gresham Central		Gary A. St. John Russell Christensen	Hult Center, Eugene Hult Center, Eugene Hult Center, Eugene
1988	AAA AA A/B	South Salem The Dalles Portland Christian		Loren Wenz Lloyd Walworth J. Robert Barber	Sprague Stayton Columbia Christian		Gary Frame Solveig Holmquist Debra Weldon	LaSells Stewart Center, Corvallis LaSells Stewart Center, Corvallis LaSells Stewart Center, Corvallis
1989	AAA AA A/B	Putnam Central Catlin Gabel		John Baker Russell Christensen Don Wolfe	South Salem St. Helens Portland Christian		Loren Wenz Bernard C. Bottens J. Robert Barber	LaSells Stewart Center, Corvallis LaSells Stewart Center, Corvallis LaSells Stewart Center, Corvallis
1990	AAA AA A/B	Putnam The Dalles Portland Christian		John Baker Lloyd Walworth J. Robert Barber	South Salem Central Catlin Gabel		Loren Wenz Russell Christensen Don W. Wolfe	LaSells Stewart Center, Corvallis LaSells Stewart Center, Corvallis LaSells Stewart Center, Corvallis
1991	4A 3A 2A/1A	South Salem Hood River Valley Portland Christian		Loren Wenz Mark Steighner J. Robert Barber	Sprague The Dalles Catlin Gabel		Gary Frame Lloyd Walworth Don W. Wolfe	George Fox University, Newberg George Fox University, Newberg George Fox University, Newberg
1992	4A 3A 2A/1A	South Salem Hood River Valley Portland Christian		Loren Wenz Mark Steighner J. Robert Barber	Cleveland The Dalles Catlin Gabel		Steve Peter Lloyd Walworth Don W. Wolfe	LaSells Stewart Center, Corvallis LaSells Stewart Center, Corvallis LaSells Stewart Center, Corvallis
1993	4A 3A 2A/1A	Centennial Hood River Valley Portland Christian		Tim Russell Mark D. Steighner J. Robert Barber	South Salem The Dalles Portland Adventist		Loren Wenz Lloyd Walworth Linda Neel	LaSells Stewart Center, Corvallis LaSells Stewart Center, Corvallis LaSells Stewart Center, Corvallis
1994	4A 3A 2A/1A	Centennial Scappoose Portland Christian		Tim Russell Mark L. Kimes J. Robert Barber	Sprague Silverton Portland Advenstist		Gary C. Frame Ric Cooper Linda Neel	LaSells Stewart Center, Corvallis LaSells Stewart Center, Corvallis LaSells Stewart Center, Corvallis
1995	4A 3A 2A/1A	South Salem Portland Christian Santiam Christian		Loren Wenz Nancy A. Parker Matt Strauser	Putnam Scappoose Oregon Episcopal		John Baker Mark L. Kimes Barbara Vardanega	LaSells Stewart Center, Corvallis LaSells Stewart Center, Corvallis LaSells Stewart Center, Corvallis
1996	4A 3A 2A/1A	South Salem Portland Christian Catlin Gabel		Loren Wenz Nancy A. Parker Don W. Wolfe	Centennial Seaside Portland Adventist		Tim Russell James Karge-Taylor Linda Neel	LaSells Stewart Center, Corvallis LaSells Stewart Center, Corvallis LaSells Stewart Center, Corvallis
1997	4A 3A 2A/1A	Cleveland Portland Christian Santiam Christian		Steve Peter Nancy Parker Matt Strauser	South Salem Tillamook Catlin Gabel		Loren Wenz Doug Albertson C. Glenn Burnett	LaSells Stewart Center, Corvallis LaSells Stewart Center, Corvallis LaSells Stewart Center, Corvallis
1998	4A 3A 2A/1A	Sprague Portland Christian Santiam Christian		Russell Christensen Nancy Parker Matt Strauser	(TIE) Dallas / South Salem Seaside Portland Adventist		Elise K. Reel / Loren Wenz Michelle Starke Linda Neel	LaSells Stewart Center, Corvallis LaSells Stewart Center, Corvallis LaSells Stewart Center, Corvallis
1999	4A 3A 2A/1A	South Salem Central Portland Christian		Loren Wenz Andy Thomas Nancy A. Parker	Dallas Seaside Santiam Christian		Elise K. Reel Michelle Starke Matt Strauser	LaSells Stewart Center, Corvallis LaSells Stewart Center, Corvallis LaSells Stewart Center, Corvallis
2000	4A 3A 2A/1A	South Salem Central Portland Christian		Loren Wenz Andy Thomas Nancy A., Parker	Sprague Seaside Santiam Christian		Russell Christensen Michelle Starke Mick Bryson	LaSells Stewart Center, Corvallis LaSells Stewart Center, Corvallis LaSells Stewart Center, Corvallis
2001	4A 3A 2A/1A	(TIE) South Salem / Sprague La Grande (TIE) Portland Christian / Westside Christian		Loren Wenz / Russell Christensen J. Michael Frasier Nancy A. Parker / Bob Crews	--- Central ---	--- Andy Thomas ---		LaSells Stewart Center, Corvallis LaSells Stewart Center, Corvallis LaSells Stewart Center, Corvallis
2002	4A 3A 2A/1A	South Salem La Grande Westside Christian		Loren Wenz J. Michael Frasier Bob Crews	Sprague The Dalles (TIE) Western Mennonite / Delphian		Russell Christensen Lloyd Walworth Scott Hochstetler / Craig Bader	LaSells Stewart Center, Corvallis LaSells Stewart Center, Corvallis LaSells Stewart Center, Corvallis
2003	4A 3A 2A/1A	Sprague La Grande Portland Christian	329 309 318	Russell Christensen J. Michael Frasier Nancy A. Parker	Putnam The Dalles Western Mennonite	326 300 314	John Baker Lloyd Walworth Scott Hochstetler	LaSells Stewart Center, Corvallis LaSells Stewart Center, Corvallis LaSells Stewart Center, Corvallis
2004	4A 3A 2A/1A	Sprague Central Portland Christian	337 331 341	Russell Christensen Jeffrey D. Witt Nancy A. Parker	South Salem Baker Western Mennonite	315 329 325	Carol Stenson Thomas L. Isaacson Scott Hochstetler	George Fox University, Newberg George Fox University, Newberg George Fox University, Newberg

OSAA Choir Championships

State Champions and 2nd Place

Year	Class	State Champion	Score	Director	2 nd Place	Score	Director	Site
2005	4A	Sprague	326	Russell Christensen	Gresham	325	Janine Kirstein	George Fox University, Newberg
	3A	Phoenix	292	Durene Putney	Baker	283	Thomas L. Isaacson	George Fox University, Newberg
	2A/1A	Western Mennonite	330	Scott Hochstetler	Portland Christian	313	Daniel Burnett	George Fox University, Newberg
2006	4A	(TIE) Cleveland / Sprague	341	Steve Peter / Russ Christensen	---	---	---	George Fox University, Newberg
	3A	Baker	341	Russ Christensen	La Grande	307	Sam Jacobson	George Fox University, Newberg
	2A/1A	Portland Christian	322	Tom Isaacson	Westside Christian	316	Bob Crews	George Fox University, Newberg
			318	Daniel A. Burnett				
2007	6A	Sprague	339	Russ Christensen	Canby	338	Tom Gingerich	George Fox University, Newberg
	5A	Cleveland	318	Samuel Barbara	(TIE) Ashland / Silverton	275	Russell Otte / Brace Langenwalter	George Fox University, Newberg
					Central	275	Jeffrey D. Witt	George Fox University, Newberg
					Catlin Gabel	301	C. Glenn Burnett	George Fox University, Newberg
	4A	Baker	305	Thomas L. Isaacson	Western Mennonite	274	Russell Adrian	George Fox University, Newberg
	3A	Westside Christian	295	Kristy Moore				
2008	2A/1A	Portland Christian	332	Daniel Burnett				
	6A	Putnam	350	John Baker	Sprague	349	Russell Christensen	George Fox University, Newberg
	5A	Cleveland	323	Samuel Barbara	Wilsonville	320	Sue Schreiner	George Fox University, Newberg
	4A	Baker	335	Thomas L. Isaacson	Philomath	320	Daniel N. Johnson	George Fox University, Newberg
	3A	Westside Christian	326	Robert Crews	Oregon Episcopal	314	Adam Steele	George Fox University, Newberg
	2A/1A	Western Mennonite	328	Russell Adrian	Salem Academy	311	Janet Carruthers	George Fox University, Newberg
2009	6A	Sprague	342	Russell Christensen	Putnam	337	John Baker	George Fox University, Newberg
	5A	Crescent Valley	324	Emily Thielen	Cleveland	317	Samuel Barbara	George Fox University, Newberg
	4A	La Grande	321	Kevin Durfee	Central	302	Jeffrey D. Witt	George Fox University, Newberg
	3A	Westside Christian	305	Bob Crews	Santiam Christian	295	Charles Perry	George Fox University, Newberg
	2A/1A	Western Mennonite	322	Russell Adrian	Veritas	308	Sally Mehler	George Fox University, Newberg
2010	6A	South Salem	348	Carol Stenson	McNary	340	Jim Taylor	George Fox University, Newberg
	5A	Cleveland	328	Samuel Barbara	Klamath Union	321	Charles Hamilton	George Fox University, Newberg
	4A	Central	325	Jeffrey D. Witt	(TIE) La Grande / Molalla	310	Kevin Durfee / Tim Frieson	George Fox University, Newberg
					Oregon Episcopal	310	Adam Steele	George Fox University, Newberg
					Salem Academy	303	Janet Carruthers	George Fox University, Newberg
	3A	Westside Christian	307	Miriam Gibby		305		
2011	2A/1A	Western Mennonite	307	Russell Adrian				
	6A	McNary	323	Jim Taylor	South Eugene	320	Kimberly McConnell	George Fox University, Newberg
	5A	Putnam	327	John Baker	Springfield	295	Stacy Swartout-McKee	George Fox University, Newberg
	4A	Klamath Union	291	Charles Hamilton	Sweet Home	274	Matthew Clark	George Fox University, Newberg
	3A	Westside Christian	273	Will Fox	Santiam Christian	270	Charles Perry	George Fox University, Newberg
	2A/1A	Veritas	290	Sally Mehler	Portland Christian	280	Daniel A. Burnett	George Fox University, Newberg
2012	6A	Sprague	337	Dr. David Brown	McNary	333	Jim Taylor	George Fox University, Newberg
	5A	Cleveland	320	Diana Rowey	Crescent Valley	309	Emily Mercado	George Fox University, Newberg
	4A	La Grande	322	Kevin Durfee	Klamath Union	316	Gerald Lemieux	George Fox University, Newberg
	3A	Westside Christian	310	Will Fox	Santiam Christian	290	Charles Perry	George Fox University, Newberg
	2A/1A	Veritas	305	Sally Mehler	North Clackamas Christian	277	Rebecca Steele	George Fox University, Newberg
2013	6A	West Salem	331	Kimberly McConnell	South Salem	328	Carol Stenson	George Fox University, Newberg
	5A	Wilson	332	Margaret Murer	Cleveland	328	Diana Rowey	George Fox University, Newberg
	4A	La Grande	337	Kevin Durfee	Klamath Union	321	Charles Hamilton	George Fox University, Newberg
	3A	Westside Christian	318	Will Fox	Oregon Episcopal	304	Adam Steele	George Fox University, Newberg
	2A/1A	North Clackamas Christian	306	Rebecca Steel	Veritas	303	Sally Mehler	George Fox University, Newberg
2014	6A	South Salem	341	Carol Stenson	(TIE) Canby / Sprague	336	Brooks Gingerich / Dr. David Brown	George Fox University, Newberg
	5A	Putnam	343	Erika Lockwood	Corvallis	327	Aubrey Peterson	George Fox University, Newberg
	4A	Central	300	Jeffrey D. Witt	La Grande	396	Kevin Durfee	George Fox University, Newberg
	3A	Westside Christian	302	Will Fox	Oregon Episcopal	282	Adam Steele	George Fox University, Newberg
	2A/1A	(TIE) Veritas / Delphian	277	Sally Mehler / Craig Bader	---	---	---	George Fox University, Newberg
2015	6A	St. Mary's Academy	337	Kathryn Briggs	Canby	334	Brooks Gingerich	George Fox University, Newberg
	5A	Corvallis	341	Aubrey Patterson	Liberty	279	Alice Dalrymple	George Fox University, Newberg
	4A	La Grande	336	Kevin Durfee	Philomath	308	Dr. Dan Johnson	George Fox University, Newberg
	3A	Westside Christian	339	Will Fox	Salem Academy	266	Jesse Dreher	George Fox University, Newberg
	2A/1A	Veritas	318	Salley Mehler	Delphian	292	Craig Bader	George Fox University, Newberg
2016	6A	South Salem	348	William McLean	West Salem	344	Kimberly McConnell	George Fox University, Newberg
	5A	Corvallis	346	Aubrey Patterson	Liberty	323	Anna Rikli	George Fox University, Newberg
	4A	Molalla	324	Tim Friesen	North Bend	323	Ken Graber	George Fox University, Newberg
	3A	Westside Christian	326	Will Fox	Portland Christian	301	Matt Caldwell	George Fox University, Newberg
	2A/1A	North Clackamas Christian	310	Rebecca Steele	Delphian	287	Craig Bader	George Fox University, Newberg
2017	6A	Sprague	332	David Brown	West Salem	331	Kimberly McConnell	George Fox University, Newberg
	5A	Corvallis	333	Aubrey Patterson	Milwaukie	297	Tara Bamford	George Fox University, Newberg
	4A	Philomath	308	Dan Johnson	La Grande	305	Kevin Durfee	George Fox University, Newberg
	3A	Westside Christian	336	Will Fox	Oregon Episcopal	291	Adam Steele	George Fox University, Newberg
	2A/1A	North Clackamas Christian	324	Rebecca Steele	Faith Bible	287	Lisa O'Reilly	George Fox University, Newberg

OSAA Choir Championships

State Champions and 2nd Place

Year	Class	State Champion	Score	Director	2 nd Place	Score	Director	Site
2018	6A	West Salem	345	Kimberly McConnell	South Salem	340	William McLean	George Fox University, Newberg
	5A	(TIE) Central / Silverton	319	Jeffery D. Witt / Cole Haoie-Valenzuela	---	---	---	George Fox University, Newberg
	4A	(TIE) La Grande / Molalla	318	Kevin Durfee / Tim Friesen	---	---	---	George Fox University, Newberg
	3A	Westside Christian	309	Will Fox	Oregon Episcopal	279	Adam Steele	George Fox University, Newberg
	2A/1A	North Clackamas Christian	313	Rebecca Steele	Triad	288	Aric Marshall	George Fox University, Newberg
2019	6A	(TIE) South Salem / West Linn	346	William McLean/ Aubrey Patterson	---	---	---	Oregon State University, Corvallis
	5A	Silverton	334	Cole Haoie-Valenzuela	Springfield	318	Stacy Swartout-McKee	Oregon State University, Corvallis
	4A	La Grande	332	Kevin Durfee	McLoughlin	292	Melissa Cunnington	Oregon State University, Corvallis
	3A	Westside Christian	319	Will Fox	Nyssa	255	Gretchen Longwell	Oregon State University, Corvallis
	2A/1A	North Clackamas Christian	325	Rebecca Steele	Lowell	313	Paul Burch	Oregon State University, Corvallis
2020	Cancelled, Coronavirus disease (COVID-19)							
2021	Cancelled, Coronavirus disease (COVID-19)							

***Give back
to the game.***

***Become an
official.***

newofficials.org



OnPoint[®]

COMMUNITY CREDIT UNION

Wilson.



TOYOTA



PACIFIC OFFICE AUTOMATION
— PROBLEM SOLVED —

moda
HEALTH



Black Bear Diner



eTeamSponsor.com

FINAL FORMS



hudl

TECHLINE
SPORTS LIGHTING



MARINES



VNN



Rush
TEAM APPAREL
EVENT MERCHANDISING
ONSITE & ONLINE

Jostens



Northwest Sports
Photography

CROWN TROPHY